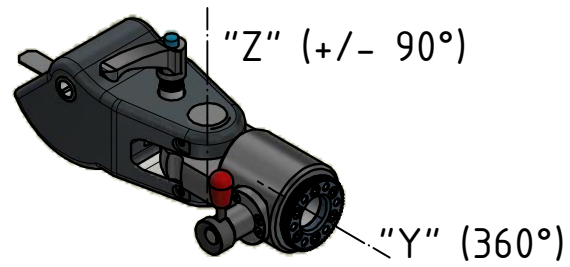
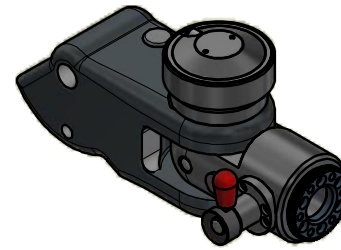


\* R \* RA \* RB \* manual - manual



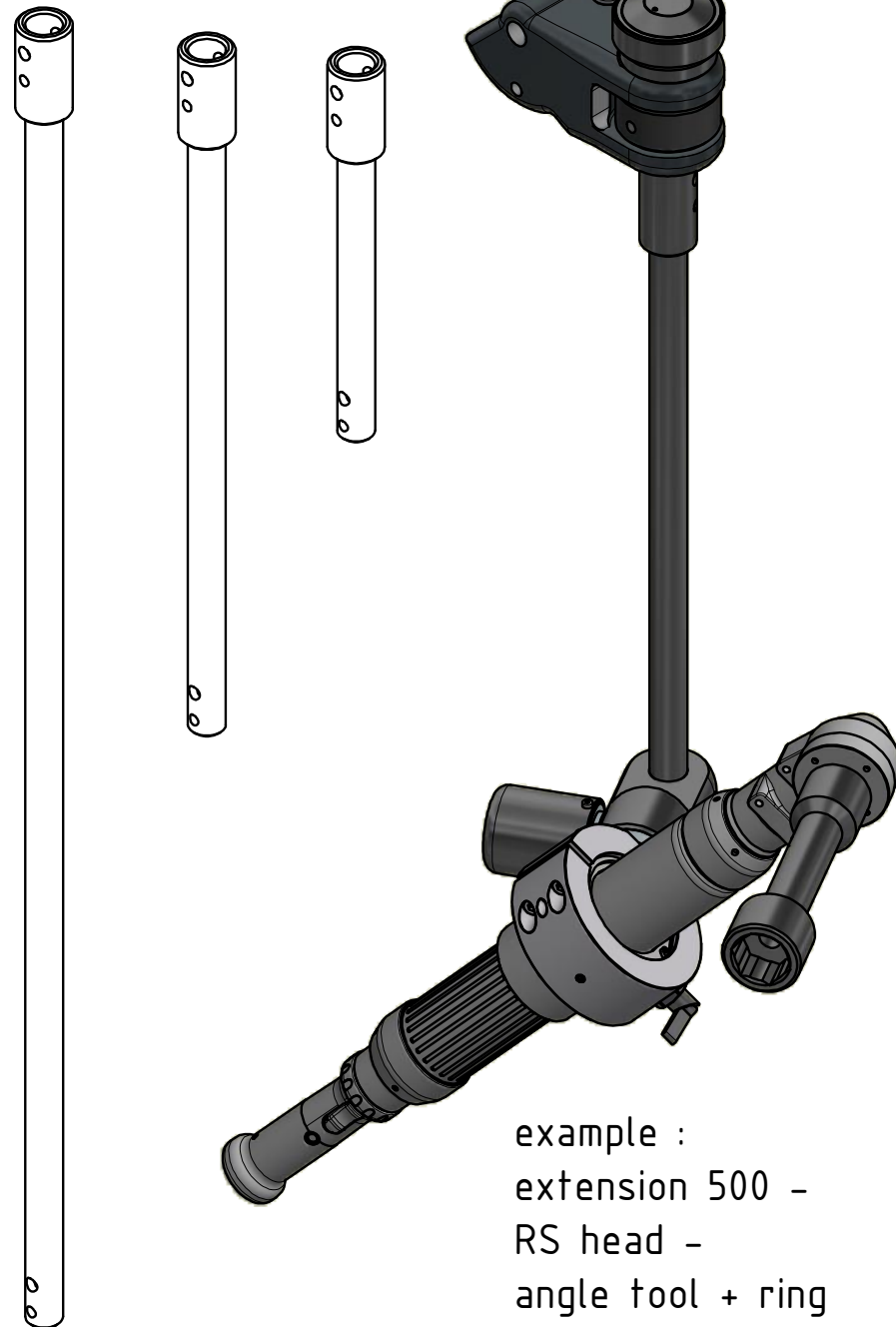
\* RAS \* RBS \* auto - manual



\* RS \* auto - auto



extension :  
1000 500 250  
applicable up or down



example :  
extension 500 -  
RS head -  
angle tool + ring  
SAFETY - OK -

TYPES OF TOOLS AND TIGHTENING	HEAD	"Z"	"Y"	"X"	SAFETY
Angular tool - All direction	* R *	manual	manual	manual	subject operator
Angular tool - All direction	* RS *	auto	auto	manual	-- OK --
Straight tool - All direction	* RA *	manual	manual	fixed	subject operator
Straight tool - All direction	* RAS *	auto	manual	fixed	-- OK --
Pistol - All direction	* RB *	manual	manual	fixed	subject operator
Pistol - All direction	* RBS *	auto	manual	fixed	-- OK --

applicable to : arms series 3 series 4 and series 6

Torque Max. vertical ----- 300 Nm.  
Torque Max. horizontal ----- 250 Nm.

- Torque Max. all direction -  
R - RA - RB ----- 200 Nm.  
RS - RAS - RBS ----- 250 Nm.

## REVOLVER HEAD

data sheet 01 -- 09-06-21

"X" manual - lockable

angle tool  
+ ring  
\* R \* RS \*

straight tool  
+ fork  
\* RA \* RAS \*

tilt (+/- 20°)

"X" fixed

pistol +  
ribbed support  
\* RB \* RBS \*

